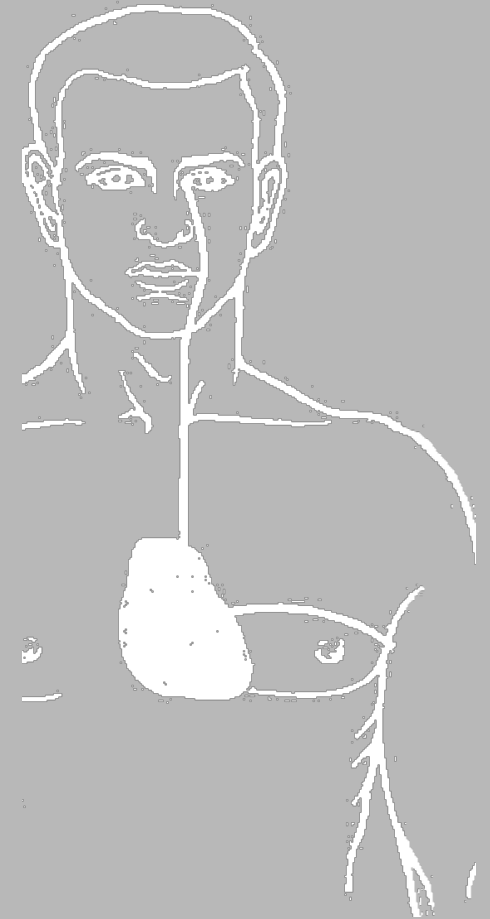
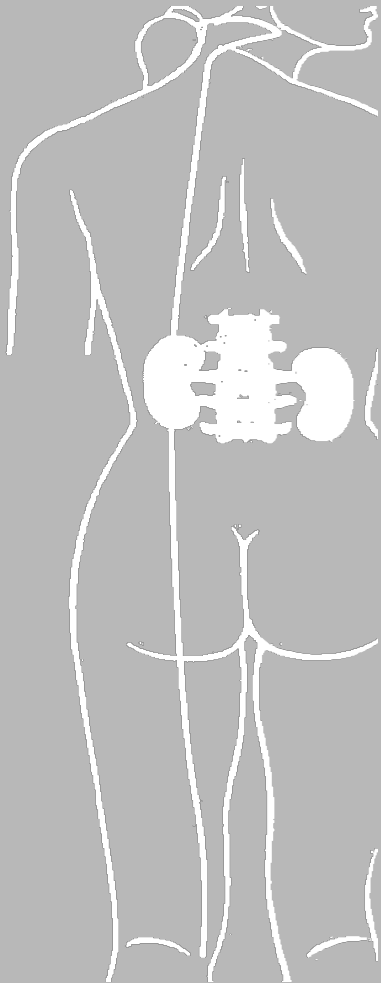


# DIVERGENT CHANNELS



**Giovanni Maciocia**

Copyright Giovanni Maciocia

# DIVERGENT CHANNELS

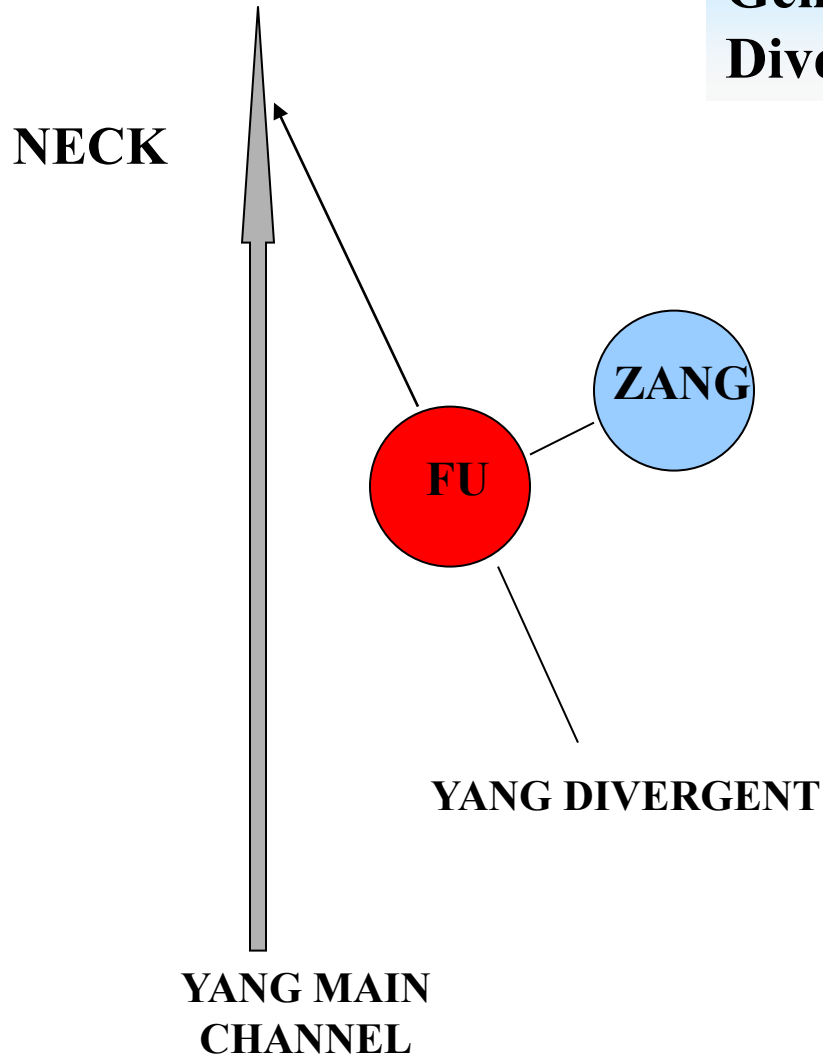
- The Divergent channels are called *Jing Bie* 经别
- Jing* means “channel” and *Bie* means “to separate”: thus, these could be translated as “divergences from the [Main] channels” rather than “Divergent channels”
- The pathways are discussed in chapter 11 of the *Ling Shu*
  - They are arranged in Yin-Yang pairs
  - They are deeper than the Main channels

## **PATTERN OF DIVERGENT CHANNELS PATHWAYS**

**The Divergent channels run deeper than the Main channels. All of them start near the lower end of the Main channels, all enter the internal organs and all emerge at the neck: thus, all the Divergent channels run from the lower to the upper part of the body.**

**As a general pattern, the Yang Divergent channels follow a pathway that is different from that of the Yin ones.**

## YANG DIVERGENT



Generally, the pathway of the Yang Divergent channels follows this pattern:

they separate from their Yang Main channel

they enter the Yang organ to which they are connected and often (though not in all cases) the related Yin organ

they emerge at the neck and join their Main channel.

## Yin Divergent channels:

- separate from their respective Yin Main channel
- some connect with their respective Zang organ (Heart, Lung and Kidneys)
- join the related Yang Divergent channel (e.g. KI-Divergent to BL-Divergent)
- then join the related Yang Main channel on the neck

**YIN DIVERGENT**

**NECK**

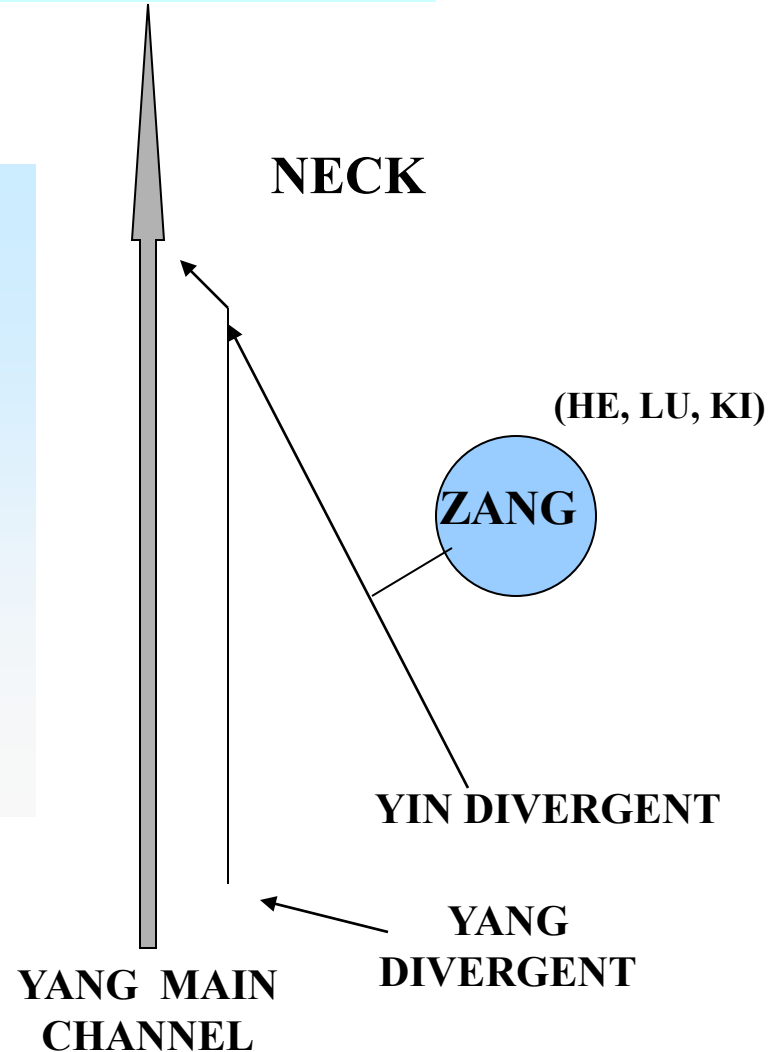
(HE, LU, KI)

**ZANG**

**YIN DIVERGENT**

**YANG  
DIVERGENT**

**YANG MAIN  
CHANNEL**



**From the above general patterns two things emerge:**

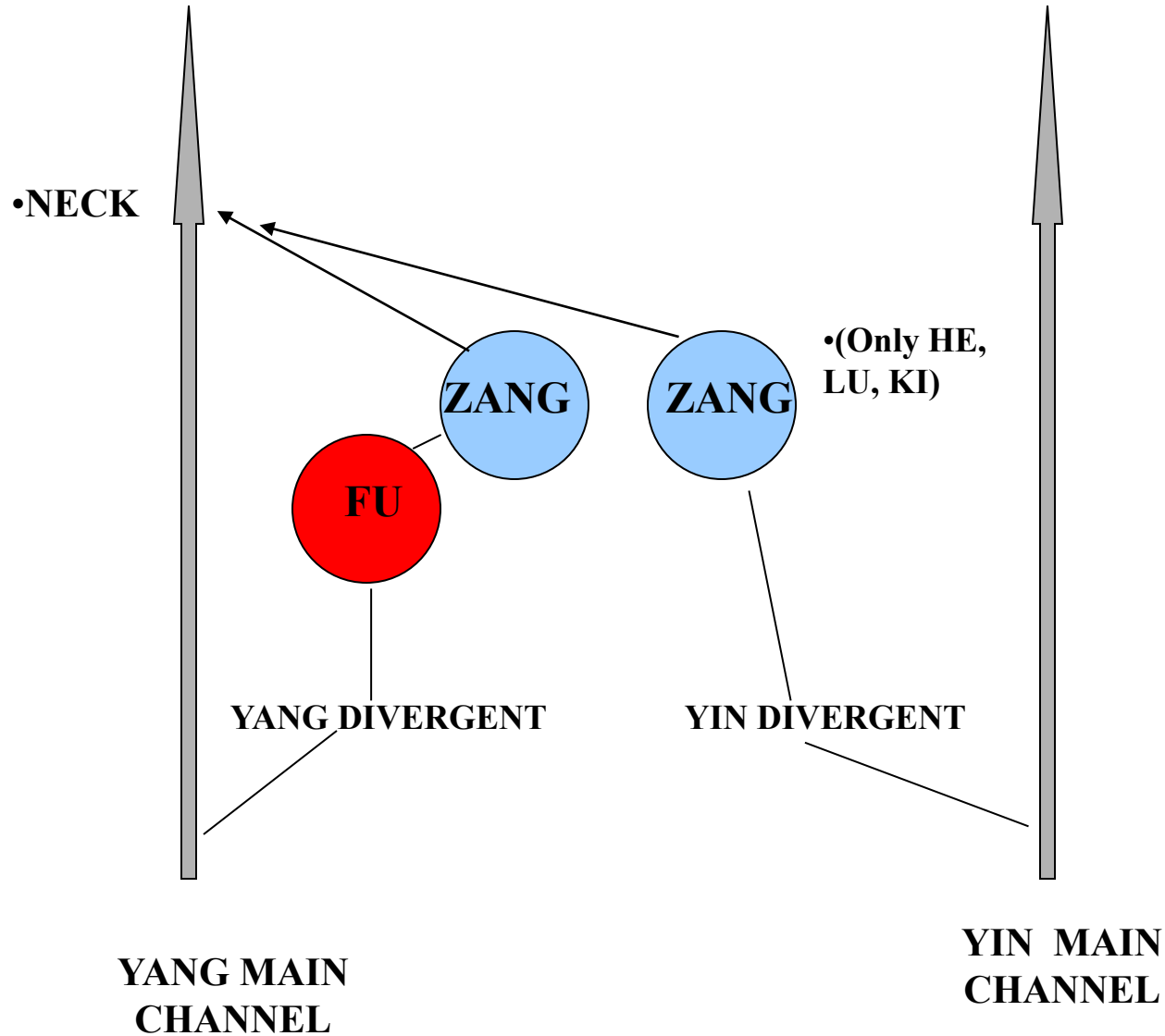
**,In the end, all Divergent channels join with the 6 Yang Main channels**

**,All Yang Divergent channels join with the respective Fu organ and the related Zang organ.**

**All of them start near the lower end of the Main channels, all enter the internal organs and all emerge at the neck: thus, all the Divergent channels run from the lower to the upper part of the body. As a general pattern, the Yang Divergent channels follow a pathway that is different from that of the Yin ones.**

**The Divergent channels have departure and meeting points. They also have entering and exiting points: where they converge, they enter and where they depart, they exit. They start from Yang channels and return to them; they harmonize Interior and Exterior and regulate the flow of Qi to and from the head.**

# DIVERGENT CHANNELS



**The Divergent channels' pathways are described in chapter 11 of the "Spiritual Axis" as pairs with the same Yin-Yang pairing as that of the Main channels. The order in which they are described, however, is different and it is as follows:**

**Bladder/Kidney**

**Gall-Bladder/Liver**

**Stomach/Spleen**

**Small Intestine/Heart**

**Triple Burner/Pericardium**

**Large Intestine/Lung**

**This order is the same as that in which the Muscle channels' pathways are listed in chapter 13 of the "Spiritual Axis".**

**The six pairs of Divergent channels have points of convergence in the upper part of the body (Upper Meeting points):**

**CHANNELS**

- Bladder – Kidney**
- Gall-Bladder – Liver**
- Stomach – Spleen**
  
- Small Intestine – Heart**
- Triple Burner – Pericardium**
- Large Intestine – Lungs**

**UPPER MEETING POINT**

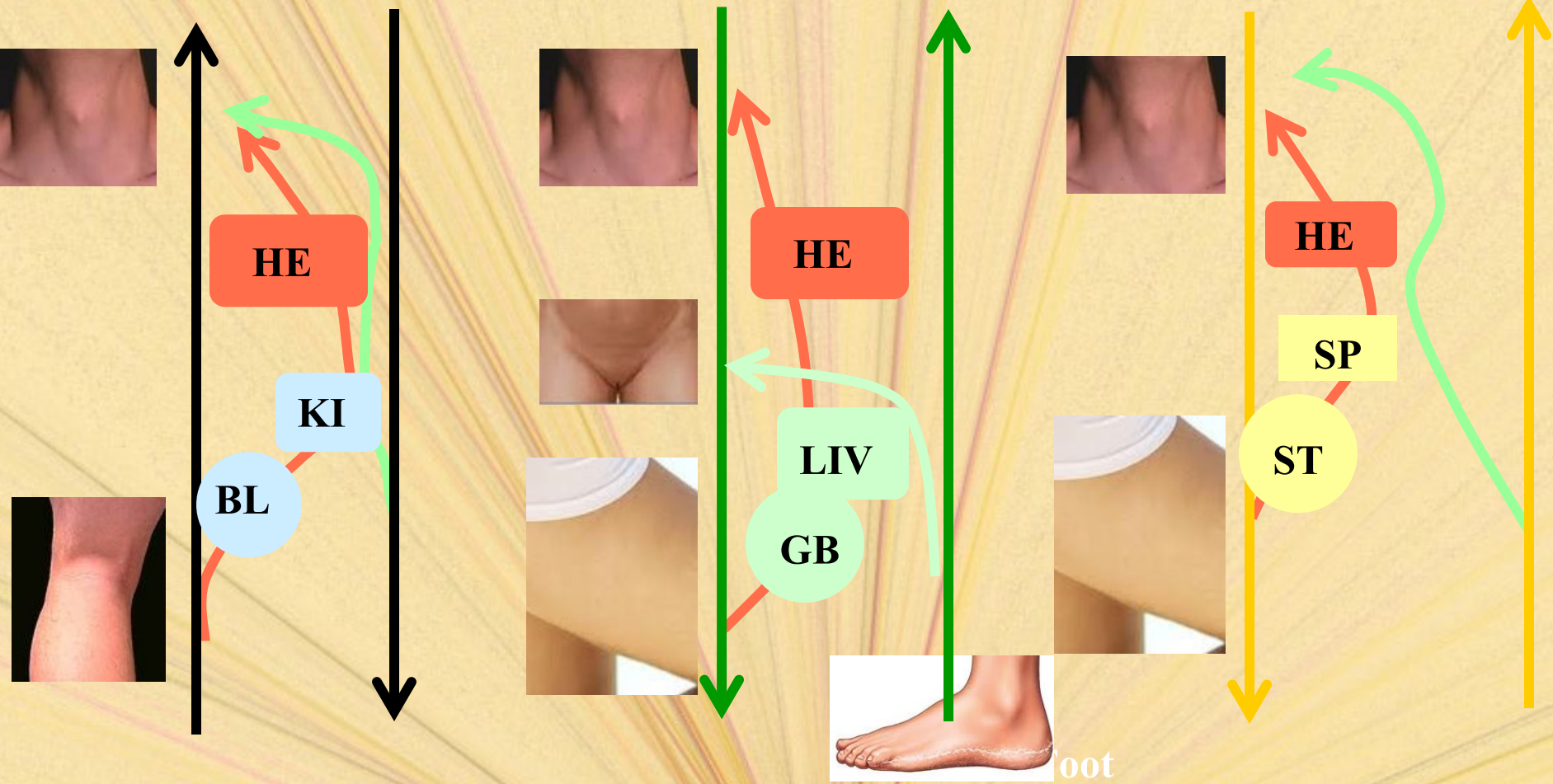
- BL-10 Tianzhu**
- G.B.-1 Tongziliao**
- ST-1 Chengqi (or ST-9  
Renyng)**
  
- BL-1 Jingming**
- T.B.-16 Tianyou**
- L.I.-18 Futu**



**Four of the six couples have a Lower Meeting area of which only two are specific points: these are the areas (or points) where the Qi of the pair of channels converges before diverging upwards. The Lower Meeting points are:**

<b>CHANNELS</b>	<b>LOWER</b>
<b>MEETING POINT</b>	
<b>Bladder/Kidney</b> (BL-40 Weizhong)	<b>Popliteal fossa</b>
<b>Gall-Bladder/Liver</b> Qugu)	<b>Pubis (Ren-2</b>
<b>Stomach/Spleen</b>	<b>Thigh</b>
<b>Small Intestine/Heart</b>	<b>Axilla</b>
<b>Triple Burner/Pericardium</b>	<b>None</b>
<b>Large Intestine/Lung</b>	<b>None</b>

# SCHEMATIC REPRESENTATION OF DIVERGENT CHANNELS PATHWAYS - COUPLES



•BL  
Main

•KI  
Main

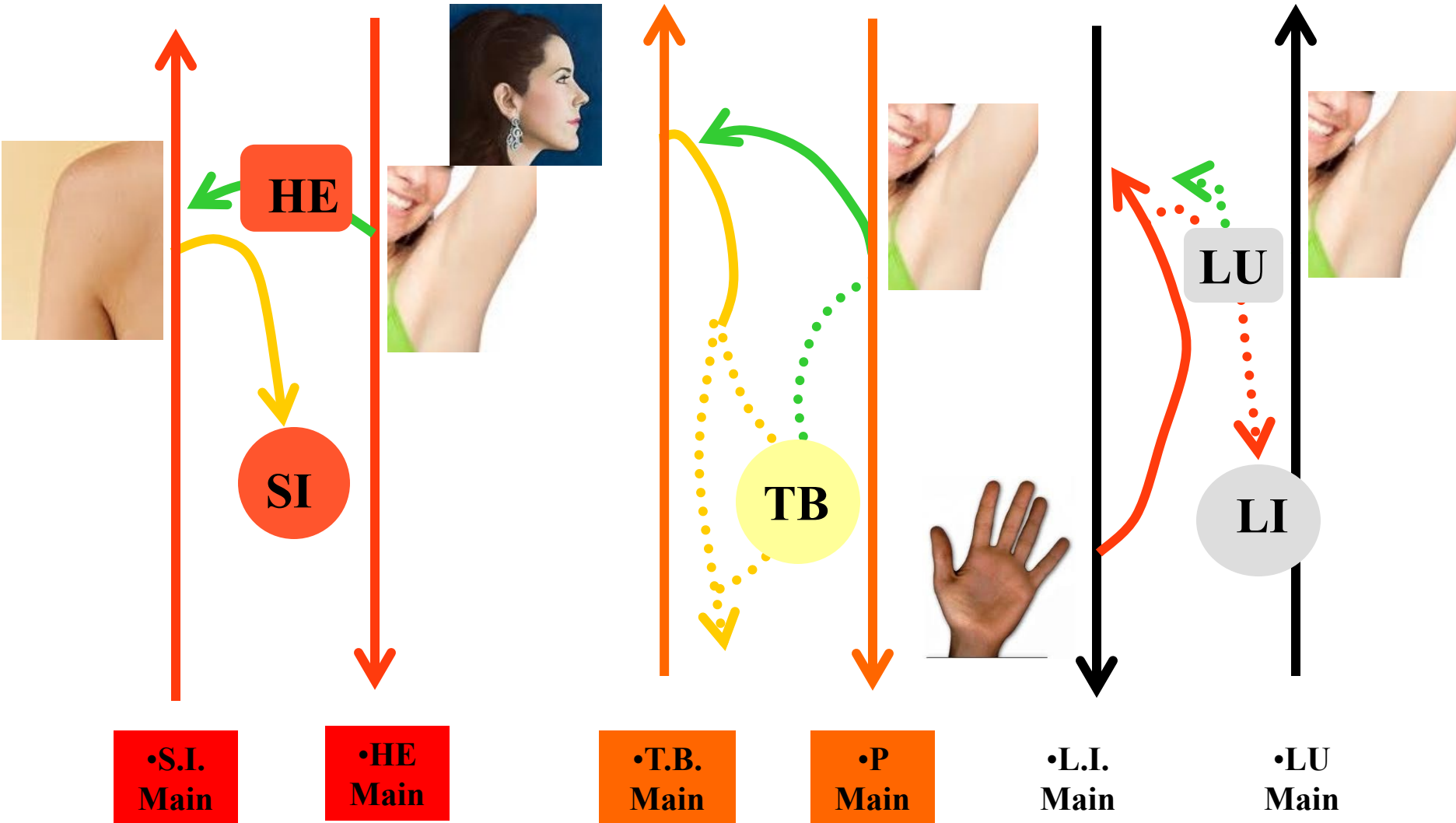
•GB  
Main

•LIV  
Main

•ST  
Main

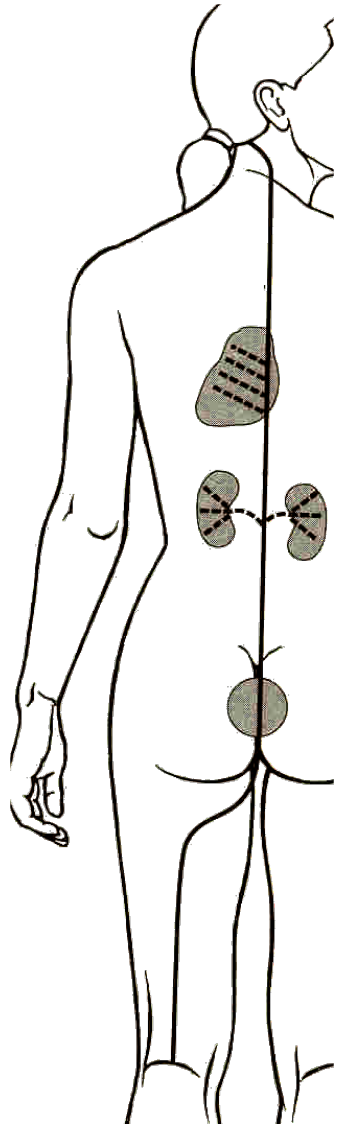
•SP  
Main

# SCHEMATIC REPRESENTATION OF DIVERGENT CHANNELS PATHWAYS - COUPLES



# PATHWAYS OF THE DIVERGENT CHANNELS

The pathways of the Divergent channels as described in chapter 11 of the “Spiritual Axis” (and in the same order) are as follows:



## BLADDER DIVERGENT CHANNEL

- **Diverges from the Bladder main channel in the popliteal fossa**
- **Goes to the anus**
- **Ascends to connect with the bladder and kidneys**
- **Ascends along the spine and disperses in the cardiac region**
- **Emerges in the neck to rejoin the Bladder Main channel**