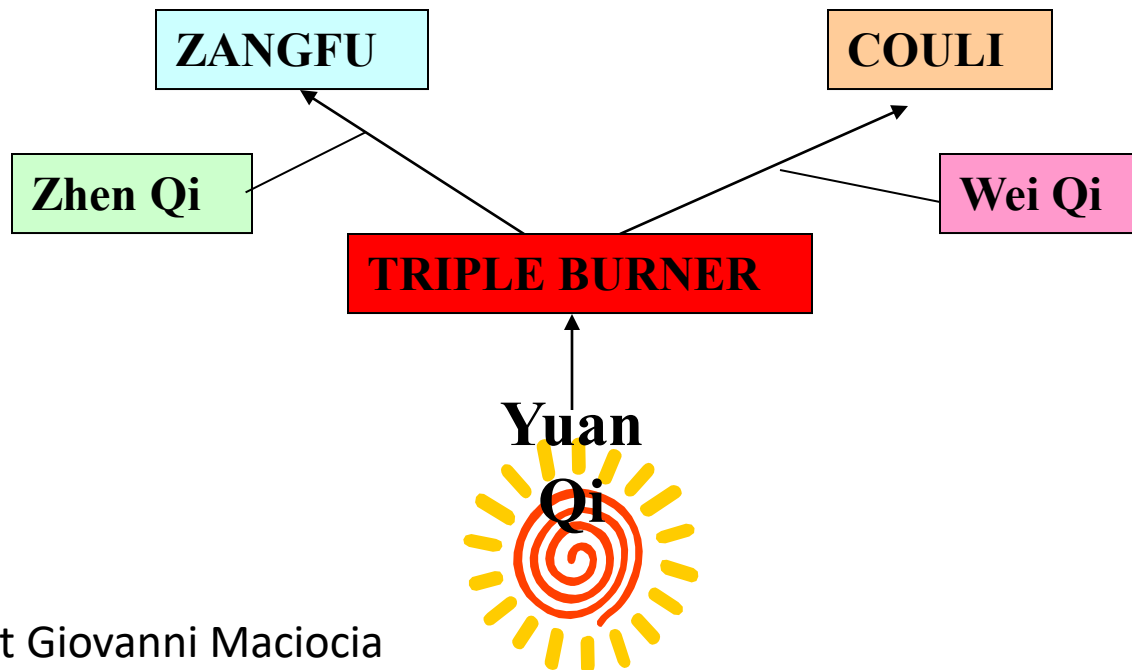


# THE *COULI* 醜 醜

*COU* 醜 means “space”, “cavity”

*LI* 醜 means “texture” or “pattern”, similar to the “veins” and “grain” of wood

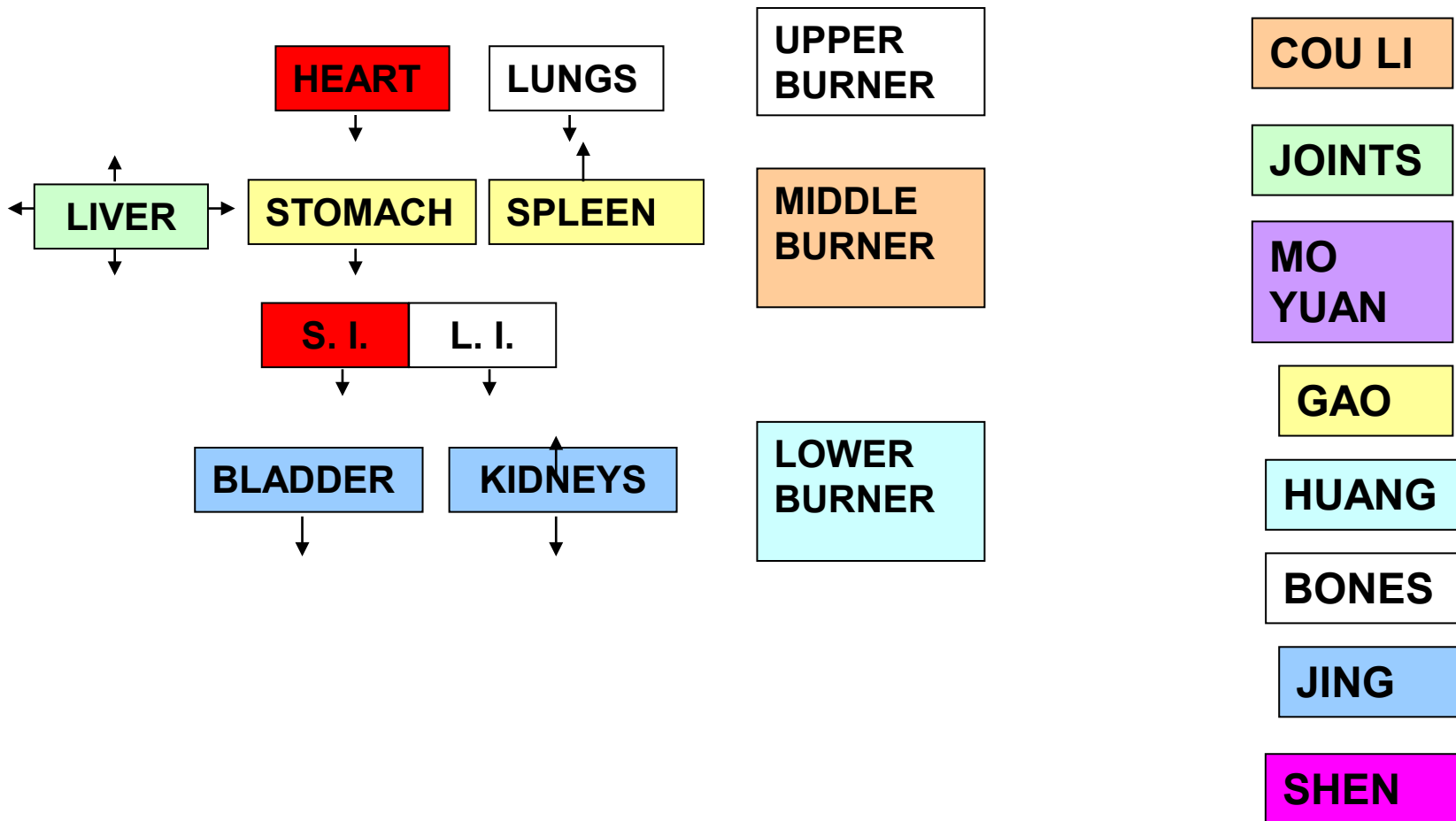
*Jin Gui Yao Lue*: “*Cou* is the space of the Triple Burner where the Original Qi and True Qi (Zhen Qi) converge, filled by Qi and Blood; *Li* is the pattern of the Zangfu”.



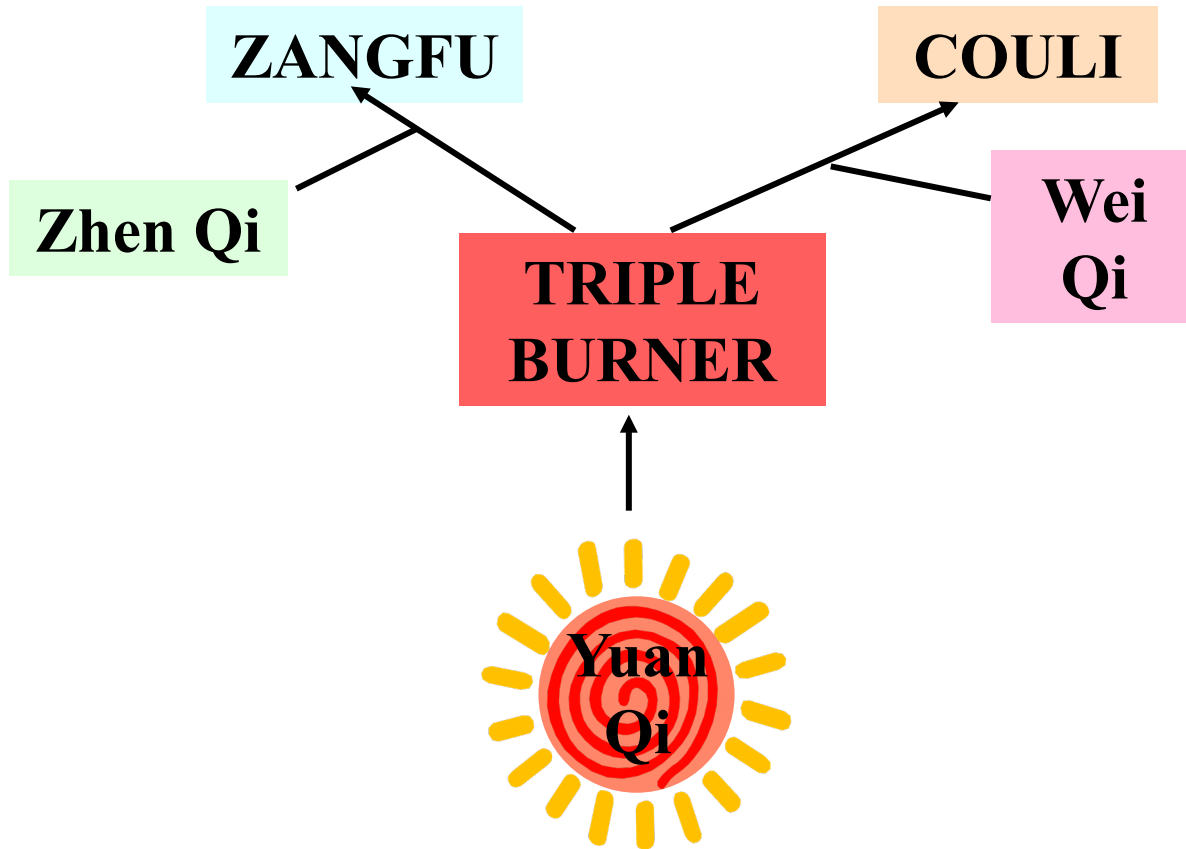
# QI MECHANISM

## ASCENDING AND DESCENDING

## ENTERING AND EXITING



# THE *COULI* 媵理



## 3D VIEW OF CHANNELS

### 2D “VERTICAL” VIEW OF CHANNELS

### “HORIZONTAL” VIEW OF CHANNELS

#### -Entering and exiting of Qi

- between spaces (*Cou* spaces)
- in the Triple Burner (large cavities)
- in and out of joints
- between front and back

### STRUCTURES BETWEEN CHANNELS AND ZANGFU

- Triple Burner
- Cou Li
- Huang
- Gao

# THE *COU LI* 腠理

*COU* 腠

=

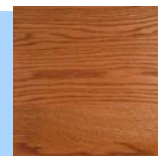
“space”,  
“cavity”



*LI* 理

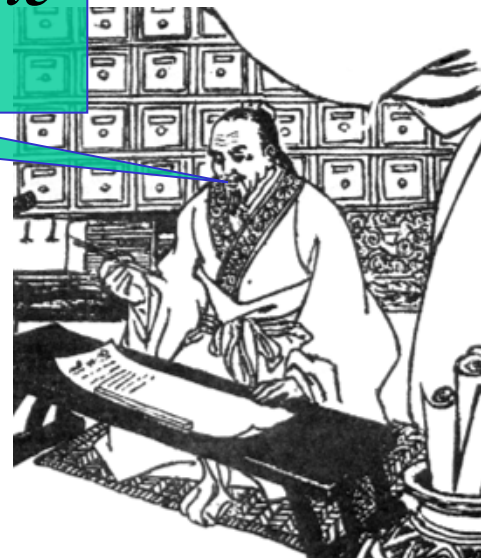
=

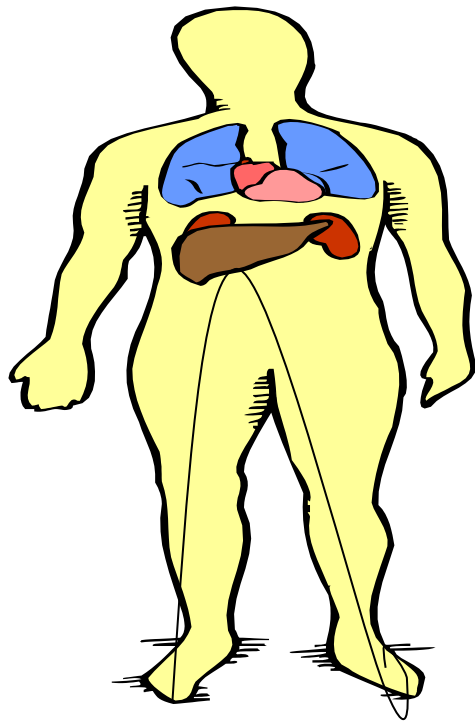
“texture” or “pattern”, similar to the “veins” and  
“grain” of wood



*Jin Gui Yao Lue*:

*“Cou is the space of the Triple Burner where the Original Qi and True Qi (Zhen Qi) converge, filled by Qi and Blood; Li is the pattern of the Zangfu”.*





## “Vertical” view of Qi movement

